

## ScriptServer PAN Printing System Host Operating System Releases



### Host Operating Systems, Windows Client, and Browser

## The Host Platform

The Host performs the functions of the queue manager. It is from this platform that ScriptServer PAN Printing System, accepts print jobs sent by the users, spools these jobs to the appropriate queue, and keeps the statistics that provide real-time performance and management tools.

Today, even the smallest of networked companies seldom has a "homogenous" network. The accounting system may be sitting on a server running HP-UX, the inventory distribution application is on a Windows Server while the company's web site resides on a Sun Microsystems box and the Intranet host is a Intel clone running Linux. Add PAN to this network and reap the benefits of PAN's uniform printing capabilities from each of these environments.

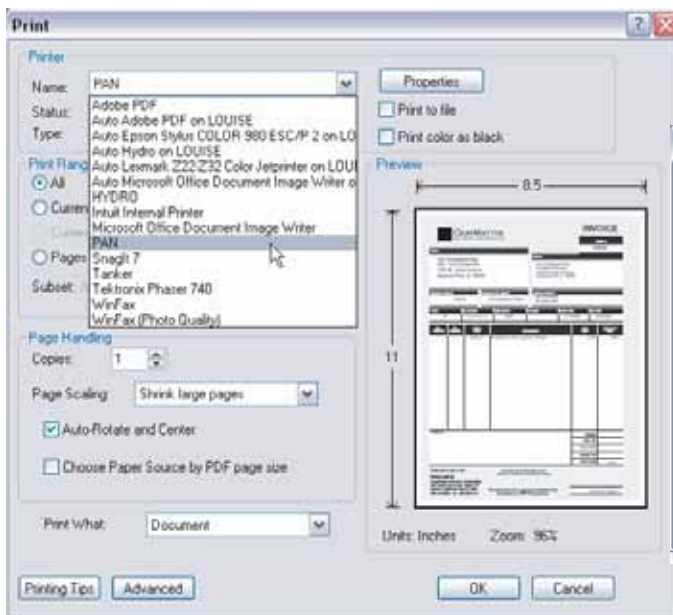
The table below lists the platforms / operating systems release schedule. Please note that you do not need to adopt any of these platforms as your "networking" system. You need only one "box" with this platform/OS on your network to become the home for the PAN host system. All users and administrators interact with and manage PAN through the common web browser.

Host	
Operating System	Release Date
HP-UX Integrity on Itanium2	<a href="#">Available now</a>
HP-UX on PA-RISC	<a href="#">Available now</a>
HP Tru64 UNIX on Alpha	<a href="#">Available now</a>
IBM AIX on RS/6000	<a href="#">Available now</a>
Linux on the I86 Processor Redhat or SUSE	<a href="#">Available now</a>
Sun Solaris on Sparc	<a href="#">Available now</a>
Windows 2000 & 2003 Server I86 Processor	<a href="#">Available now</a>

# ScriptServer PAN Windows Client

The Windows Client for ScriptServer PAN is a free print driver that can be installed to each of your Windows workstations. The free print driver can be downloaded from the PAN host, and it installs a printer named PAN into your Windows workstation.

When the print feature of an application is invoked a user can select from their systems available printers, which now includes a PAN printer.



In figure 1 the properties windows is up and this is where the user is able to access all the options mentioned above. In this example, the user has selected the area Chicago, on the printer HP LaserJet 4050N, with the form Invoice, to print.

With PAN, the administrator (or an authorized user) can create a PAN "Form" which describes the input media, the processing, and the post-printing properties that the printer should use each time a job is sent to this "Form" on this printer.

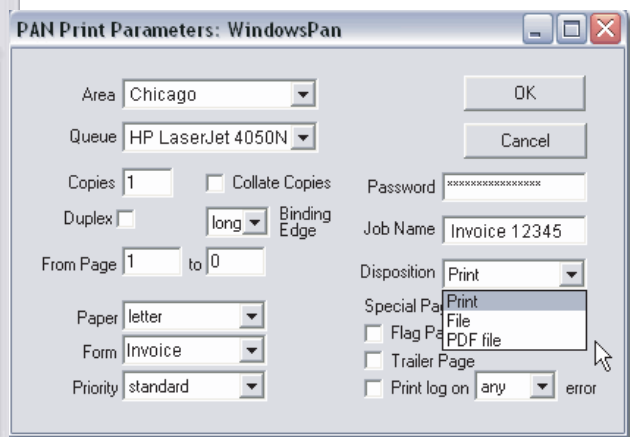


Figure 1. ScripterServer PAN Windows Client

If a user selects the PAN printer to print the job, then the job is then routed to a PAN host and all of the features of PAN become available to the user.

All the printers on the Server using PAN becomes immediately available to the Windows workstation users, including all forms, whether the forms are an image, a layout form or both.

By centralizing your printing system with ScriptServer PAN all the printers on the PAN host are available to all workstations running the Windows Client.

For example, if a user in California needs to print an invoice for a sales rep selling a product in Chicago the user selects the PAN printer from the Windows workstation as seen in figure 1. After this the user may then select the properties box to indicate which where the invoice should be printed, on which printer, with what form, and which disposition. You can have all these capabilities with just one product, ScriptServer PAN.

Creating a PAN "Form" which says that a sheet of paper has one side and should print out three copies of an invoice that has either customer original, customer copy, and remittance copy printed on it, means no more wasted paper and lost time.

Every time the user selects the area and queue the job will be printed with the invoice form, always three copies with the correct text identifying what copy it is. You will never have to restore your properties again, because PAN remembers them for you.

Plus if you make changes to the form the changes are deploy immediately across the network when using PAN.

Another advantage for the administrators is less print driver installations. Anytime a new printer is installed into the network the new driver only needs to be installed into PAN. In other words, there is no more wasted time installing the driver on each Windows workstation.

# Client Command Line & Browser Tools

Command Line Print job submission clients are available free for the following systems:

<b>Client Command Line</b>	
<b>Operating System</b>	<b>Release Date</b>
HP-UX Integrity on Itanium2	<a href="#">Available now</a>
HP-UX on PA-RISC	<a href="#">Available now</a>
HP Tru64 UNIX on Alpha	<a href="#">Available now</a>
IBM AIX on RS/6000	<a href="#">Available now</a>
Linux on the I86 Processor	<a href="#">Available now</a>
Sun Solaris on Sparc	<a href="#">Available now</a>
Windows 2000 & XP Printer Driver & Command Line I86 Processor	<a href="#">Available now</a>

The system also includes the ability to manage the system, for both administrators and client, through a standard web browser. ScriptServer PAN Currently supports the listed minimum browser versions.

<b>Browser Platform</b>	<b>Minimum Browser Versions</b>
Linux on the Intel processor	Netscape 6.0
HP Tru64 UNIX	Netscape 6.0
HP-UX	Netscape 6.0 or Internet Explorer 5.0
Sun Solaris	Netscape 6.0 or Internet Explorer 5.0
IBM AIX	Netscape 6.0 or Internet Explorer 5.0
SCO Unix	Netscape 6.0
Windows NT, 2000, XP	Netscape 6.0 or Internet Explorer 5.0
Mac OS 8 and later	Netscape 6.0 or Internet Explorer 5.0
Silicon Graphics IRIX	Netscape 6.0



© Copyright 2006 GrayMatter Software Corp.  
All rights reserved